



Dean Marcilynn A. Burke

Dear Alumni and Friends:

Hello from beautiful Eugene! Our 2021-22 JD and LLM academic year has been off and running since August 23.

Thanks to carefully developed safety plans, the law school welcomed students, staff, and faculty in-person this fall. Under our policy, everyone must be vaccinated, unless they apply and qualify for an exemption, in which case they must undergo **weekly testing**. We also require face coverings and have implemented other measures to help ensure the health and safety of our community.

I am pleased to report that according to University Health Services results from Monday, August 30, 99.4% of the Law community have complied with the notification of vaccine requirement. Of those, 97.3% are fully vaccinated and 2.2% requested an exemption.



JD Class 2024

In August, we welcomed a new class to begin the Oregon Law journey – one of the the largest classes in the history of the law school.

- 175 entering students, an increase of 11% over last year
- Median LSAT: 159, an increase of two points
- Median GPA: 3.54, an increase of .06
- Students of color: 27% – a decrease of 2% over last year’s historic high
- Female students: 59% – the largest percentage ever at Oregon Law

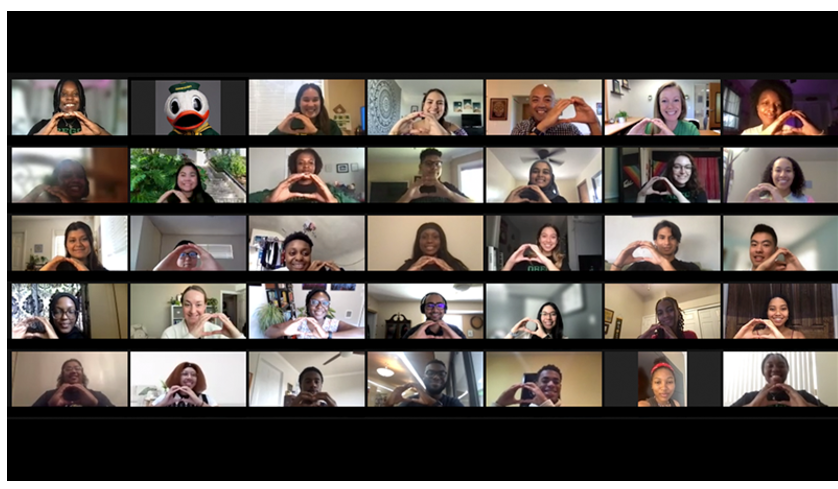
Our Newest LLM Students

We also welcomed 10 LLM students from around the world.



2021 Bar Exam Results

Congratulations to our recent grads who **passed** the July 2021 bar exam! Oregon Law alumni who took the exam for the first time achieved a passage rate of 90%. That rate was six points higher than the state’s rate of 84% for all first-time bar takers.



Building a Pipeline – Addressing Law School Diversity, Preparation

During June 28 - July 22, 2021, we offered our second Law School Admission Council (LSAC) sponsored **Pre-Law Undergraduate Scholars (PLUS) Program**. The PLUS Program is designed to increase the number of lawyers from underrepresented groups by introducing first- and second-year college students to the skills important for law school success. We offered a safe, remote experience for 30 students from 24 undergraduate schools.



New and Visiting Faculty

First, I'd like to welcome back **Garrett Epps** as a Professor of Practice. He returns to us from the University of Baltimore Law School, where he was professor from 2008 to 2021. Before heading east, Professor Epps was the Orlando John and Marian H. Hollis Professor of Law for 16 years at Oregon Law.

We also welcomed **five visiting professors**.

Ryan Gauthier is an associate professor at Thompson Rivers University in Kamloops, British Columbia, where he has taught since 2016.

Andrew Jurs is the Clemens J. Smith Faculty Research Scholar and a Professor of Law at Drake University Law School in Des Moines, Iowa.

Tade Oyewunmi most recently worked on various research projects at Vermont Law School's Institute for Energy and the Environment.

Katrina Robinson most recently represented clients in civil antitrust litigation and complex commercial disputes at Latham & Watkins in Chicago.

Emily R. Wright comes to us from Mercer Law's Advanced Legal Writing Certificate Program and its bar preparation program.

Faculty Promotions

Please join me in congratulating the following Oregon Law professors who have been promoted:



[Gregory Dotson](#)
Associate Professor



[Michael Fakhri](#)
Professor



[Mohsen Manesh](#)
Professor

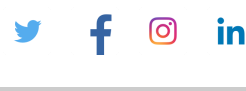


[Jennifer Reynolds](#)
Professor

I hope that you and your loved ones remain safe and healthy in mind, body, and spirit. Thank you for your continued support.

Go Ducks!

Marcilynn A. Burke
Dean and Dave Frohnmayer Chair in Leadership and Law



2021 Alumni Award Recipients

Jaqua Distinguished Alumni

Don Corson, BS '76, JD '85

Kurt Hansen, JD '84
(awarded posthumously)

Minoru Yasui Justice

Bruce Lamb, JD '84

Benjamin Beijing Wang, JD '98

Outstanding Recent Alumni

Michael Steven Brewer, JD '12

Moorisha Bey-Taylor, JD '11

Sigvanna "Meghan" Topkok, JD '17

In Memoriam

[Dean's Advisory Council member Kurt Hansen, JD '84](#)

[Mary S. Lawrence, Founding Director of LRW Program](#)

[Mary S. Lawrence, Founding Director of LRW Program](#)

[Mary S. Lawrence, Founding Director of LRW Program](#)

[Mary S. Lawrence, Founding Director of LRW Program](#)

[Mary S. Lawrence, Founding Director of LRW Program](#)

[Mary S. Lawrence, Founding Director of LRW Program](#)

[Mary S. Lawrence, Founding Director of LRW Program](#)

[Mary S. Lawrence, Founding Director of LRW Program](#)

[Mary S. Lawrence, Founding Director of LRW Program](#)

[Mary S. Lawrence, Founding Director of LRW Program](#)

[Mary S. Lawrence, Founding Director of LRW Program](#)

[Mary S. Lawrence, Founding Director of LRW Program](#)

[Mary S. Lawrence, Founding Director of LRW Program](#)

[Mary S. Lawrence, Founding Director of LRW Program](#)

[Mary S. Lawrence, Founding Director of LRW Program](#)

[Mary S. Lawrence, Founding Director of LRW Program](#)

[Mary S. Lawrence, Founding Director of LRW Program](#)

[Mary S. Lawrence, Founding Director of LRW Program](#)

[Mary S. Lawrence, Founding Director of LRW Program](#)

[Mary S. Lawrence, Founding Director of LRW Program](#)

[Mary S. Lawrence, Founding Director of LRW Program](#)

[Mary S. Lawrence, Founding Director of LRW Program](#)

[Mary S. Lawrence, Founding Director of LRW Program](#)

[Mary S. Lawrence, Founding Director of LRW Program](#)

[Mary S. Lawrence, Founding Director of LRW Program](#)

[Mary S. Lawrence, Founding Director of LRW Program](#)

[Mary S. Lawrence, Founding Director of LRW Program](#)

[Mary S. Lawrence, Founding Director of LRW Program](#)

[Mary S. Lawrence, Founding Director of LRW Program](#)

[Mary S. Lawrence, Founding Director of LRW Program](#)

[Mary S. Lawrence, Founding Director of LRW Program](#)

[Mary S. Lawrence, Founding Director of LRW Program](#)

[Mary S. Lawrence, Founding Director of LRW Program](#)

[Mary S. Lawrence, Founding Director of LRW Program](#)

[Mary S. Lawrence, Founding Director of LRW Program](#)

[Mary S. Lawrence, Founding Director of LRW Program](#)

[Mary S. Lawrence, Founding Director of LRW Program](#)

[Mary S. Lawrence, Founding Director of LRW Program](#)

[Mary S. Lawrence, Founding Director of LRW Program](#)

[Mary S. Lawrence, Founding Director of LRW Program](#)

[Mary S. Lawrence, Founding Director of LRW Program](#)

[Mary S. Lawrence, Founding Director of LRW Program](#)

[Mary S. Lawrence, Founding Director of LRW Program](#)

[Mary S. Lawrence, Founding Director of LRW Program](#)

[Mary S. Lawrence, Founding Director of LRW Program](#)

[Mary S. Lawrence, Founding Director of LRW Program](#)

[Mary S. Lawrence, Founding Director of LRW Program](#)

[Mary S. Lawrence, Founding Director of LRW Program](#)

[Mary S. Lawrence, Founding Director of LRW Program](#)

[Mary S. Lawrence, Founding Director of LRW Program](#)

[Mary S. Lawrence, Founding Director of LRW Program](#)

[Mary S. Lawrence, Founding Director of LRW Program](#)

[Mary S. Lawrence, Founding Director of LRW Program](#)

[Mary S. Lawrence, Founding Director of LRW Program](#)

[Mary S. Lawrence, Founding Director of LRW Program](#)

[Mary S. Lawrence, Founding Director of LRW Program](#)

[Mary S. Lawrence, Founding Director of LRW Program](#)

[Mary S. Lawrence, Founding Director of LRW Program](#)

[Mary S. Lawrence, Founding Director of LRW Program](#)

Share this email:

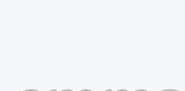


Manage your preferences | Opt out using TrueRemove®
Got this as a forward? Sign up to receive our future emails.

View this email online.

1221 University of Oregon
Eugene, OR | 97403-1221 US

This email was sent to .
To continue receiving our emails, add us to your address book.



[Subscribe](#) to our email list.